

Self Priming Centrifugal Pump w/Autostart



Model T6A60S-C2.2TA FT4

Size 6" x 6"



Total Head		Capacity Of Pump In U.S. Gallons Per Minute (GPM) At Continuous Performance				
P.S.I.	Feet					
56.3	130	340	340	340	340	340
52.0	120	480	540	540	540	540
43.4	100	640	865	910	910	910
34.7	80	750	960	1110	1225	1260
26.0	60	795	1020	1200	1365	1490
17.3	40	825	1065	1265	1460	1600
8.7	20	840	1120	1330	1530	1660
Suction Lift		25'	20'	15'	10'	5'

PHOTO NOT AVAILABLE AT TIME OF PUBLISHING

PUMP SPECIFICATIONS

Size: 6" x 6" (152 mm x 152 mm) NPT - Female.

Casing: Gray Iron 30.

Maximum Operating Pressure 94 psi (648 kPa).*

Semi-Open Type, Two Vane Impeller: Ductile Iron 65-45-12.

Handles 3" (76,2 mm) Diameter Spherical Solids.

Impeller Shaft: Stainless Steel 17-4 PH.

Replaceable Wear Plate: Carbon Steel ASTM A36.

Adjustable Back Cover Plate: Gray Iron 30.

Removable Inspection Cover Plate: Gray Iron 30; 20 lbs. (9,1 kg.).

Seal Plate: Gray Iron 30.

Seal: Cartridge Type, Mechanical, Oil-Lubricated, Double Floating, Self-Aligning. Silicon Carbide Rotating and Stationary Faces. Stainless Steel 316 Stationary Seat. Fluorocarbon Elastomers (DuPont Viton® or Equivalent). Stainless Steel 18-8 Cage and Spring. Maximum Temperature of Liquid Pumped 160°F (71°C).*

Flap Valve: Neoprene w/Steel Reinforcement.

Shaft Sleeve: Alloy Steel 4130.

Bearing Housing: Gray Iron 30.

Radial Bearing: Open Single Row Ball.

Thrust Bearing: Open Double Row Ball.

Bearing Lubrication: SAE 30 Non-Detergent Oil.

Flange: Gray Iron 30.

Gaskets: Compressed Synthetic Fibers, and PTFE.

O-Rings: Buna-N, Fluorocarbon Elastomers (DuPont Viton® or Equivalent).

Hardware: Standard Plated Steel.

Brass Pressure Relief Valve.

Bearing and Seal Cavity Oil Level Sight Gauges.

*Consult Factory for Applications Exceeding Maximum Pressure and/or Temperature Indicated.

Standard Equipment: Hoisting Bail. 90° Discharge Elbow. Combination Skid Base w/Fuel Tank. [Full Feature Control Panel](#) [Single Ball Type Float Switch](#)**

Optional Equipment: Battery. High Speed (55 MPH/89 KM/H) Single Axle Pneumatic-Tired Wheel Kit w/wo DOT-Approved Lights and Electric Brakes. [Tandem Axle Over-the-Road Trailer](#) (Meets DOT Requirements) Liquid Level Transducer. Skid Base Kit.

**50 Ft. (15 m) Standard Length; Dual Switches and Alternate Cable Lengths Available From the Factory.



ENGINE SPECIFICATIONS

Model: Caterpillar C2.2TA.

EPA Tier: Final Tier 4.

Type: Turbocharged, Aftercooled Four Cylinder, Diesel Engine.

Displacement: 134 Cu. In. (2,2 Liters).

Lubrication: Forced Circulation.

Air Cleaner: Dry Type.

Fuel Tank: 70 U.S. Gals. (265 Liters).

Full Load Operating Time: 22.5 Hrs.

Starter: 12V Electric.

Standard Features: Muffler w/Weather Cap, DOC Exhaust After Treatment System.

Engine Control Features: Padlockable Box with Throttle Control, Tachometer, Coolant Temperature, Oil Pressure, Voltage and Overstart Indicators/Shutdowns. Manual/Stop/Auto Keyswitch. Audible Startup Warning Delay. Electronic Fuel Level Sensor. Fuel Level Display/Alarm/Shutdown.

CATERPILLAR PUBLISHED PERFORMANCE:

Maximum Gross BHP (Intermittent)
67 (50.0 kW) @ 2800 RPM



GORMAN-RUPP PUMPS

www.grpumps.com

Specifications Subject to Change Without Notice

Printed in U.S.A.

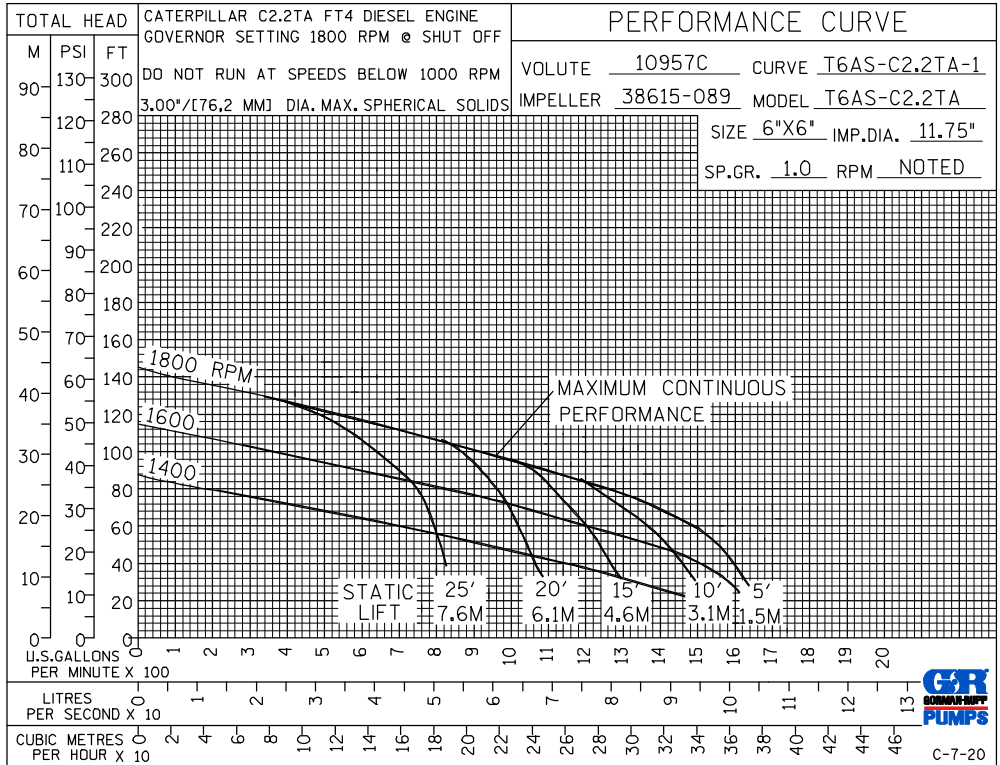
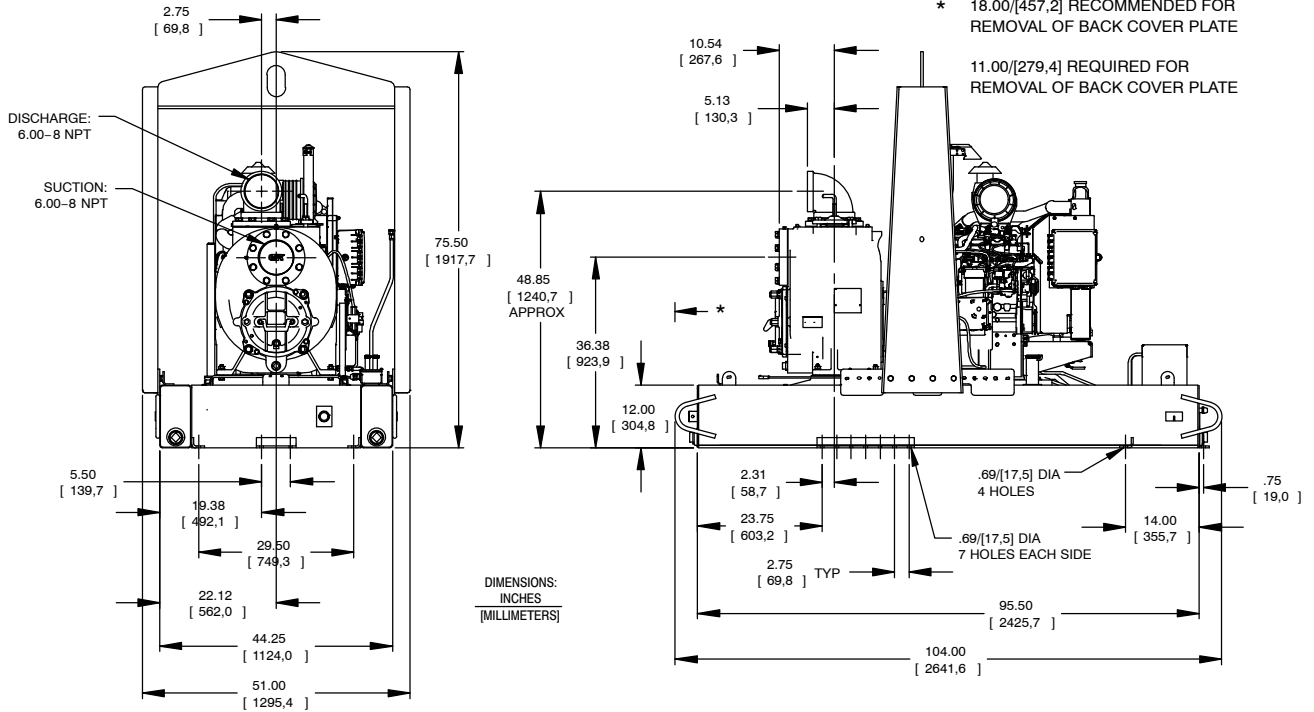
Specification Data

SECTION 45, PAGE 1572

APPROXIMATE DIMENSIONS and WEIGHTS

SKID BASE

NET WEIGHT: 3675 LBS. (1667,0 KG.)
SHIPPING WEIGHT: 3925 LBS. (1780,4 KG.)
EXPORT CRATE SIZE: 273 CU. FT. (7,7 CU. M.)



GORMAN-RUPP PUMPS

www.grpumps.com

Specifications Subject to Change Without Notice

Printed in U.S.A.