



Self Priming Centrifugal Pump w/Autostart

Model T8A60S-4045H

Size 8" x 8"



125 M

Total Head		Capacity of Pump in U.S. Gallons per Minute (GPM) at Continuous Performance			
P.S.I.	Feet				
54.6	126	600	600	600	600
52.0	120	800	800	800	800
43.4	100	1300	1560	1560	1560
34.7	80	1360	1780	2038	2180
26.0	60	1420	1860	2120	2580
17.4	40	1480	1920	2230	2700
Suction Lift		25'	20'	15'	10'

PUMP SPECIFICATIONS

Size: 8" x 8" (203 mm x 203 mm) Flanged.

Casing: Gray Iron 30.

Maximum Operating Pressure 90 psi (621 kPa).*

Semi-Open Type, Two Vane Impeller: Ductile Iron 65-45-12.

Handles 3" (76.2 mm) Diameter Spherical Solids.

Impeller Shaft: Stainless Steel 17-4 PH.

Externally Adjustable, Replaceable Wear Ring: Gray Iron 30.

Removable Adjustable Cover Plate: Gray Iron 30; 66 lbs. (30 kg).

Flap Valve: Neoprene w/Steel Reinforcing.

Seal Plate: Gray Iron 30.

Shaft Sleeve: Alloy Steel 4130.

Seal: Cartridge Type, Mechanical, Oil-Lubricated, Double Floating, Self-Aligning. Silicon Carbide Rotating and Stationary Faces. Stationary Seat. Fluorocarbon Elastomers (DuPont Viton® or Equivalent). Stainless Steel 316 Stationary Seat, Cage and Spring. Maximum Temperature of Liquid Pumped 160°F (71°C).*

Bearing Housing: Gray Iron 30.

Radial/Thrust Bearings: Open Double Ball.

Bearing and Seal Cavity Lubrication: SAE 30 Non-Detergent Oil.

Flanges: Gray Iron 30.

Gaskets: Buna-N, Compressed Synthetic Fibers, PTFE, Cork, and Rubber.

O-Rings: Buna-N.

Hardware: Standard Plated Steel.

Brass Pressure Relief Valve.

Bearing and Seal Cavity Oil Level Sight Gauges.

*Consult Factory for Applications Exceeding Maximum Pressure and/or Temperature Indicated.

Standard Equipment: Hoisting Bail. 90° Discharge Elbow. Strainer.

Single Ball Type Float Switch.**

**50 Ft. (15 m) Standard Length; Dual Switches and Alternate Cable Lengths Available From the Factory.

Optional Equipment: Battery. G-R Hard Iron Impeller, Seal Plate and Wear Plate. High Speed (55 MPH/89 KM/H) Single Axle Pneumatic-Tired Wheel Kit w/wo DOT-Approved Lights and Electric Brakes. Tandem Axle Over-the-Road Trailer (Meets DOT Requirements) Available w/Either Electric or Hydraulic Surge Brakes, Running Lights, Jack Stands and Safety Cables/Chains. Full Feature Control Panel For Use w/Submersible Transducer Liquid Level Sensor (50 Ft. [15 M] Cable Standard, Alternate Lengths Available).



ENGINE SPECIFICATIONS

Model: John Deere 4045H "Power Tech".

EPA Tier: Interim Tier 3.

Type: Four Cylinder, Turbocharged, Charge Air Cooled, Enclosed, Liquid Cooled Diesel Engine.

Displacement: 275 Cu. In. (4.5 Liters).

Lubrication: Forced Circulation.

Air Cleaner: Dry Type.

Fuel Tank: 88 U.S. Gals. (330 Liters).

Full Load Operating Time: 22.6 Hrs.

Starter: 12V Electric.

Standard Features: Muffler w/Weather Cap.

Optional: Electronic Fuel Level Sensor.

Engine Control Features: Padlockable Box with Throttle Control, Tachometer, Coolant Temperature, Oil Pressure, Voltage and Overstart Indicators/Shutdowns. Manual/Stop/Auto Keyswitch. Audible Startup Warning Delay. Fuel Level Display/Alarm/Shutdown (For Use With Optional Fuel Level Sensor).

JOHN DEERE PUBLISHED PERFORMANCE:

Maximum Gross BHP (Heavy Duty)
115 (86 kW) @ 2200 RPM



GORMAN-RUPP PUMPS

www.grpumps.com

Specifications Subject to Change Without Notice

Printed in U.S.A.

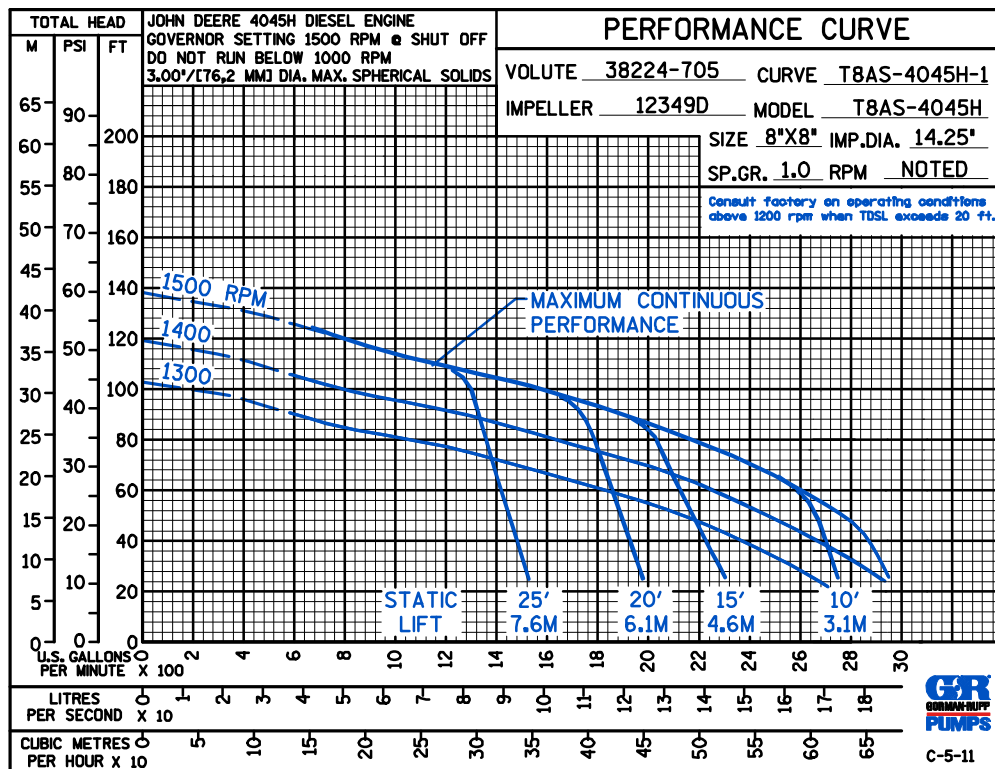
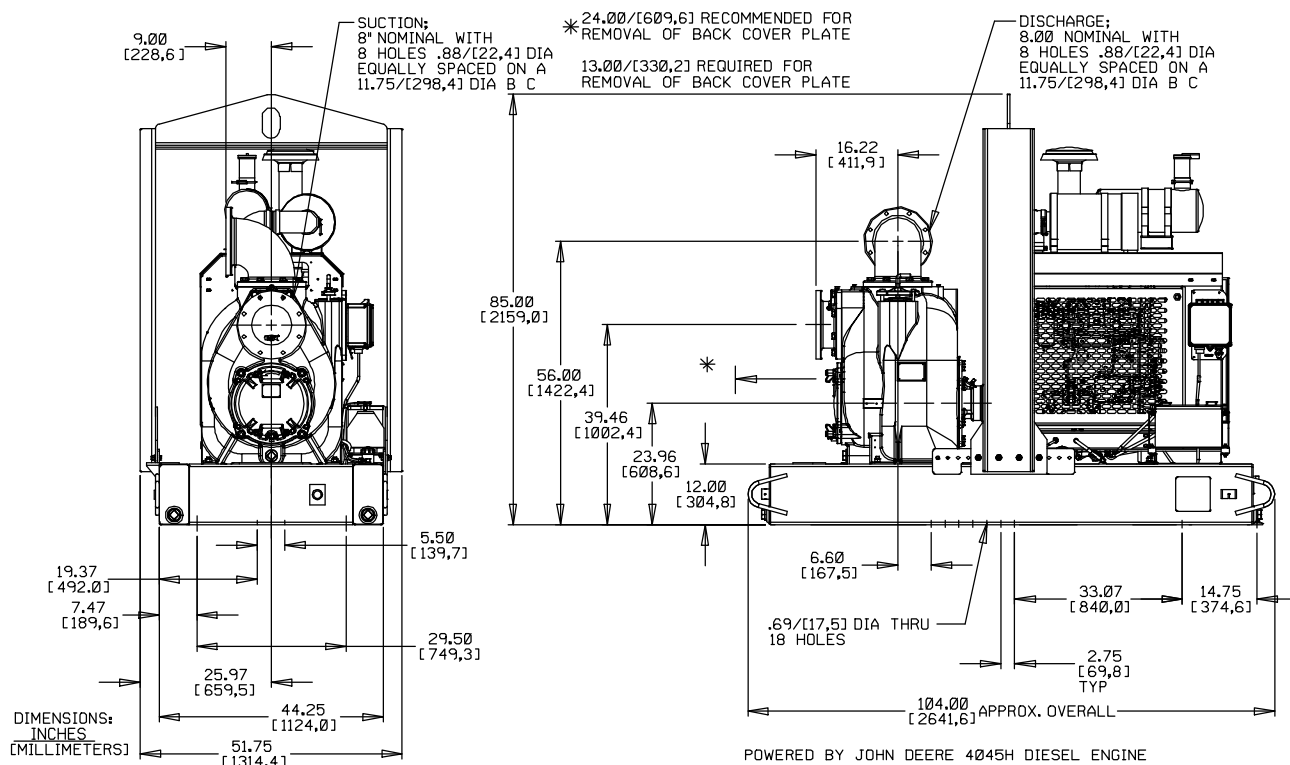
Specification Data

SECTION 45, PAGE 1660

APPROXIMATE
DIMENSIONS and WEIGHTS

SKID BASE
NET WEIGHT: 4280 LBS. (1941 KG.)
SHIPPING WEIGHT: 4480 LBS. (2032 KG.)
EXPORT CRATE SIZE: 335 CU. FT. (9,5 CU. M.)

2-WHEEL
4745 LBS. (2152 KG.)
4745 LBS. (2152 KG.)



GORMAN-RUPP PUMPS

www.grpumps.com

Specifications Subject to Change Without Notice

Printed in U.S.A.