

Self Priming Centrifugal Pump

Model 83A2-B

Size 3" x 3"



PUMP SPECIFICATIONS

Size: 3" x 3" (76 mm x 76 mm) NPT - Female.

Casing: Gray Iron 30.

Maximum Operating Pressure 87 psi (600 kPa).*

Semi-Open Type, Four Vane Impeller: Gray Iron 30.

Handles 3/4" (19,1 mm) Diameter Spherical Solids.

Impeller Shaft: Carbon Steel 1045.

Replaceable Wear Plate: Carbon Steel 1026.

Pedestal: Gray Iron 30.

Seal Plate: Gray Iron 30.

Seal Liner: Copper Alloy C26000.

Flap Valve: Gray Iron 30 and Buna-N ^w/Nylon Reinforcement.

Radial and Thrust Bearings: Open Single Row Ball.

Bearing Lubrication: SAE 30 Non-Detergent Oil.

Suction Flange: Gray Iron 25.

Gaskets: Vegetable Fiber.

Hardware: Standard Plated Steel.

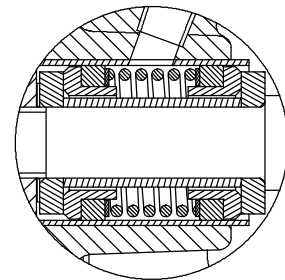
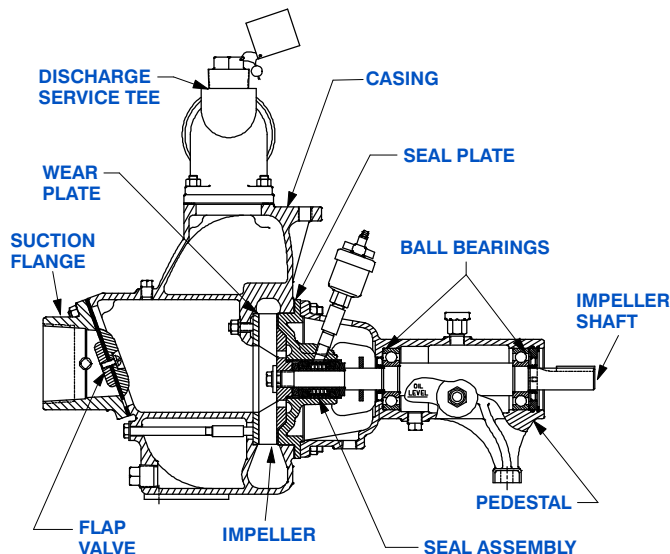
Discharge Service Tee: Gray Iron 30.

Oil Level Sight Gage.

Optional Equipment: Strainer.

Consult Factory for Additional Options.

**Consult Factory for Applications Exceeding
Maximum Pressure and/or Temperature Indicated.*



SEAL DETAIL

Double, Grease-Lubricated with Spring-Loaded Grease Cup. Sintered Bronze Stationary Seal Seats. Steel Rotating Faces. Neoprene Packing Rings. Maximum Temperature of Liquid Pumped, 110°F (43°C). Maximum Suction Pressure 10 psi (69 kPa).*



GORMAN-RUPP PUMPS

www.grpumps.com

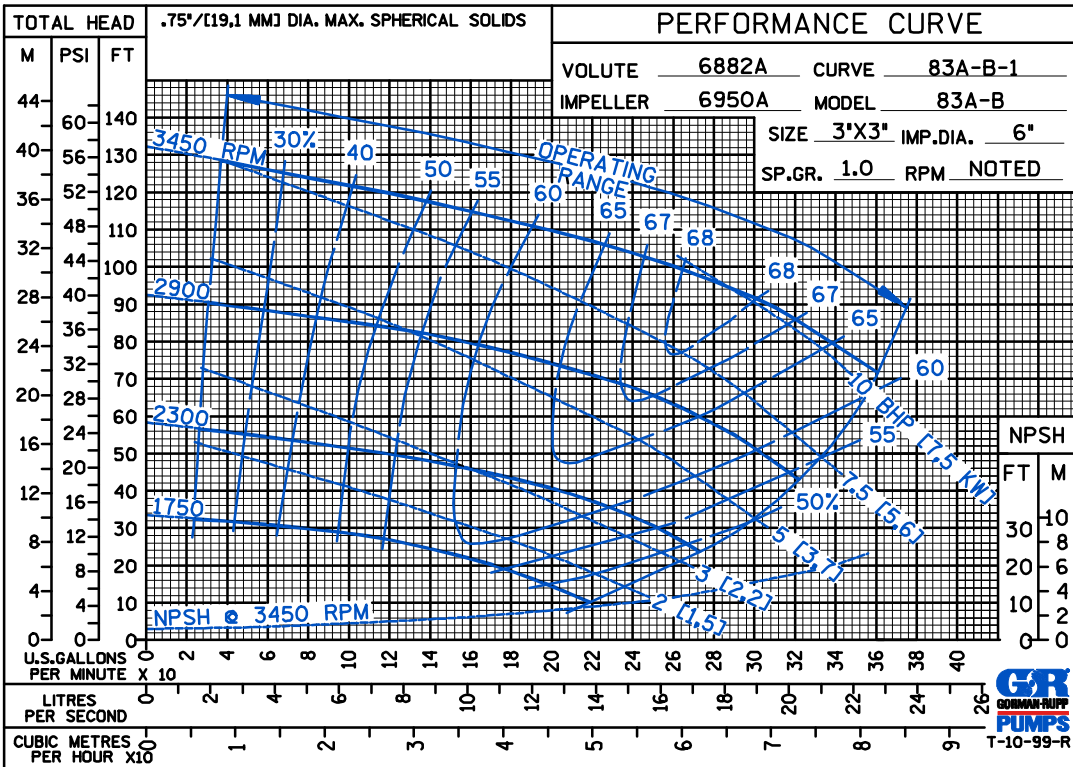
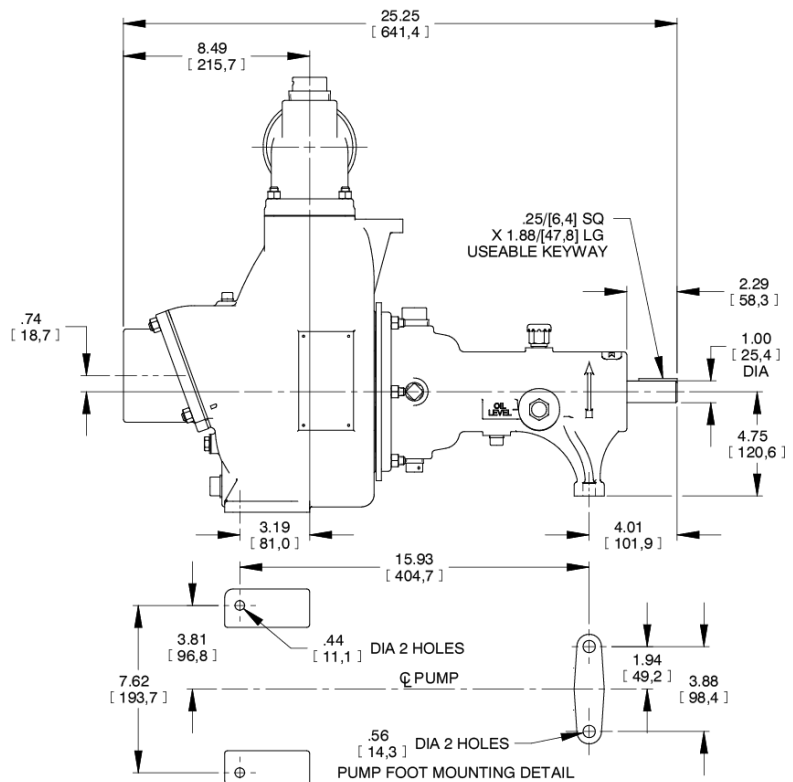
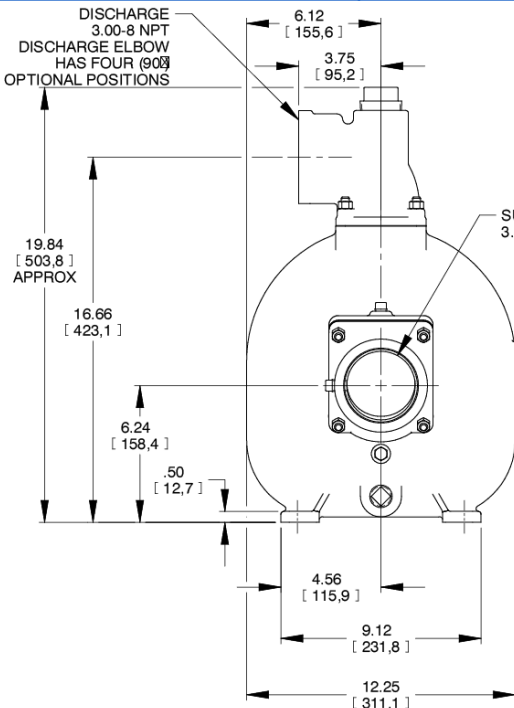
Specifications Subject to Change Without Notice

Specification Data

SECTION 50, PAGE 1450

APPROXIMATE DIMENSIONS and WEIGHTS

NET WEIGHT: 115 LBS. (52,2 KG.)
 SHIPPING WEIGHT: 125 LBS. (56,7 KG.)
 EXPORT CRATE: 8.5 CU. FT. (0,24 CU. M.)

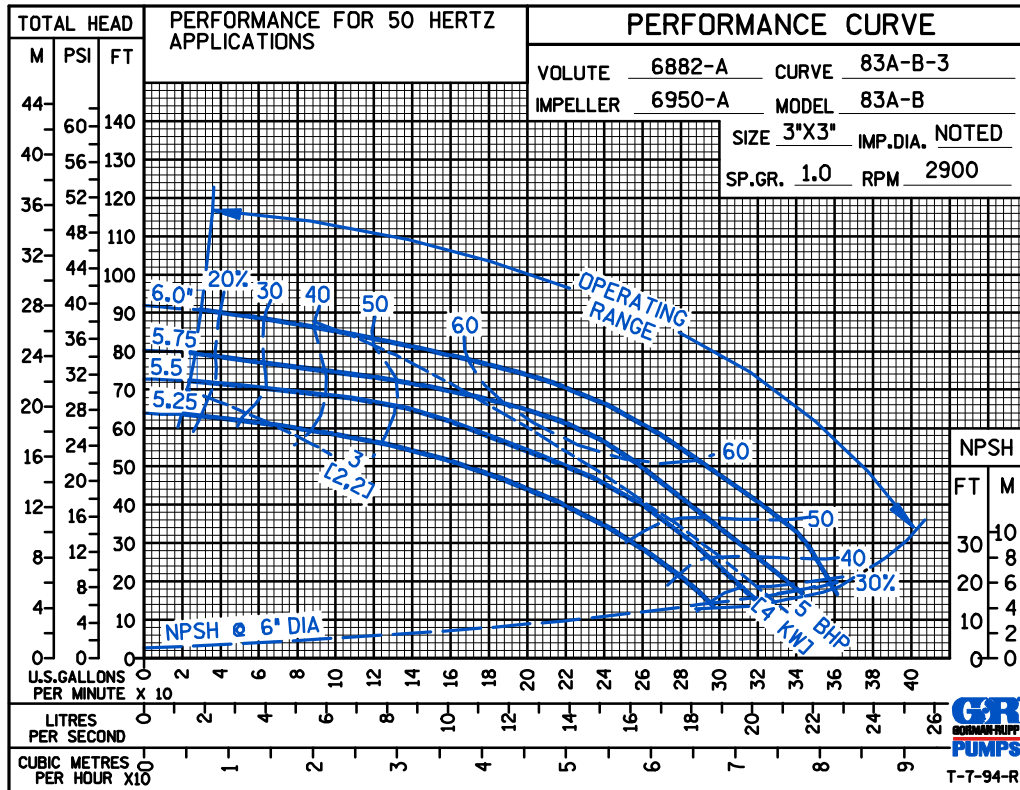


GORMAN-RUPP PUMPS

www.grpumps.com

Specifications Subject to Change Without Notice

50 HERTZ
PERFORMANCE
BASED ON
WATER



GORMAN-RUPP PUMPS

www.grpumps.com

Specifications Subject to Change Without Notice