

Self Priming Centrifugal Pump

Super
U SERIES

Model U6B65S-B

Size 6" x 6"



PUMP SPECIFICATIONS

Size: 6" x 6" (152 mm x 152 mm) NPT - Female.

Casing: Stainless Steel CD4MCu.

Maximum Operating Pressure 123 psi (848 kPa).*

Semi-Open Type, Five Vane Impeller: Stainless Steel CD4MCu.

Handles 1 1/4" (31,7 mm) Diameter Spherical Solids.

Impeller Shaft: Stainless Steel 17-4 PH.

Replaceable Wear Plate: Stainless Steel CD4MCu.

Removable Adjustable Cover Plate: Stainless Steel CD4MCu;
81 lbs.(37 kg).

Flap Valve: Fluorocarbon Elastomers (DuPont Viton® or Equivalent);
Stainless Steel CD4MCu.

Bearing Housing: Stainless Steel CD4MCu.

Seal Plate: Stainless Steel CD4MCu.

Radial/Thrust Bearings: Open Double Ball.

Bearing and Seal Cavity Lubrication: SAE 30 Non-Detergent Oil.

Suction Flange: 125# Stainless Steel CD4MCu.

Discharge Flange: 125# Stainless Steel 316.

Gaskets: Fluorocarbon (DuPont Viton® or Equivalent) and PTFE.

O-Rings: Fluorocarbon (DuPont Viton® or Equivalent).

Hardware: Stainless Steel 316.

Stainless Steel 316 Pressure Relief Valve.

Bearing and Seal Cavity Oil Level Sight Gauges.

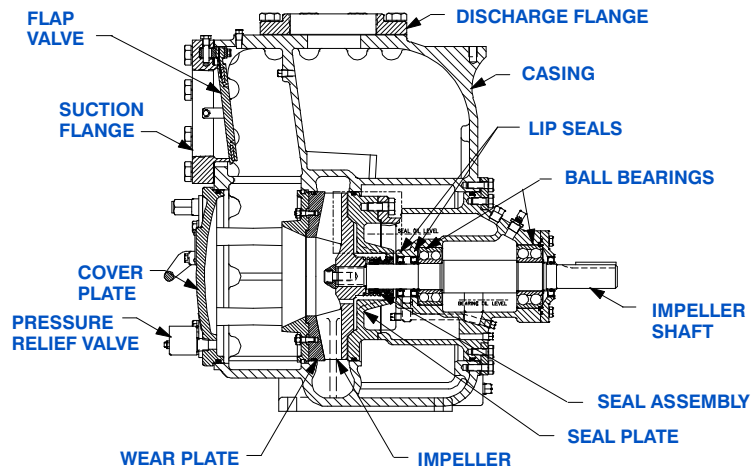
Optional Equipment: Automatic Air Release Valve. 120V/240V

Casing Heater. High Pump Temperature Shutdown Kit. Metal Bellows Seal. Stainless Steel CD4MCu Suction Discharge Spool Flanges;

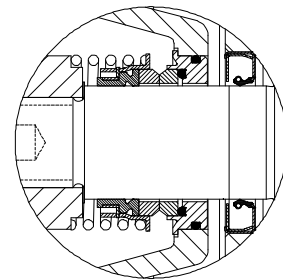
6" ASA (**Specify Model U6B65S-B /F**).

150 mm DIN 2527.

**Consult Factory for Applications Exceeding Maximum Pressure and/or Temperature Indicated.*



Shown w/Optional Spool Flanges



SEAL DETAIL

Mechanical, Oil-Lubricated, Double, Floating, Self-Aligning. Silicon Carbide Rotating and Stationary Faces. Stainless Steel 316 Stationary Seat. Fluorocarbon Elastomers (DuPont Viton® or Equivalent). Stainless Steel 316 Cage and Spring. Maximum Temperature of Liquid Pumped, 160°F (71°C).*



GORMAN-RUPP PUMPS

www.grpumps.com

Specifications Subject to Change Without Notice

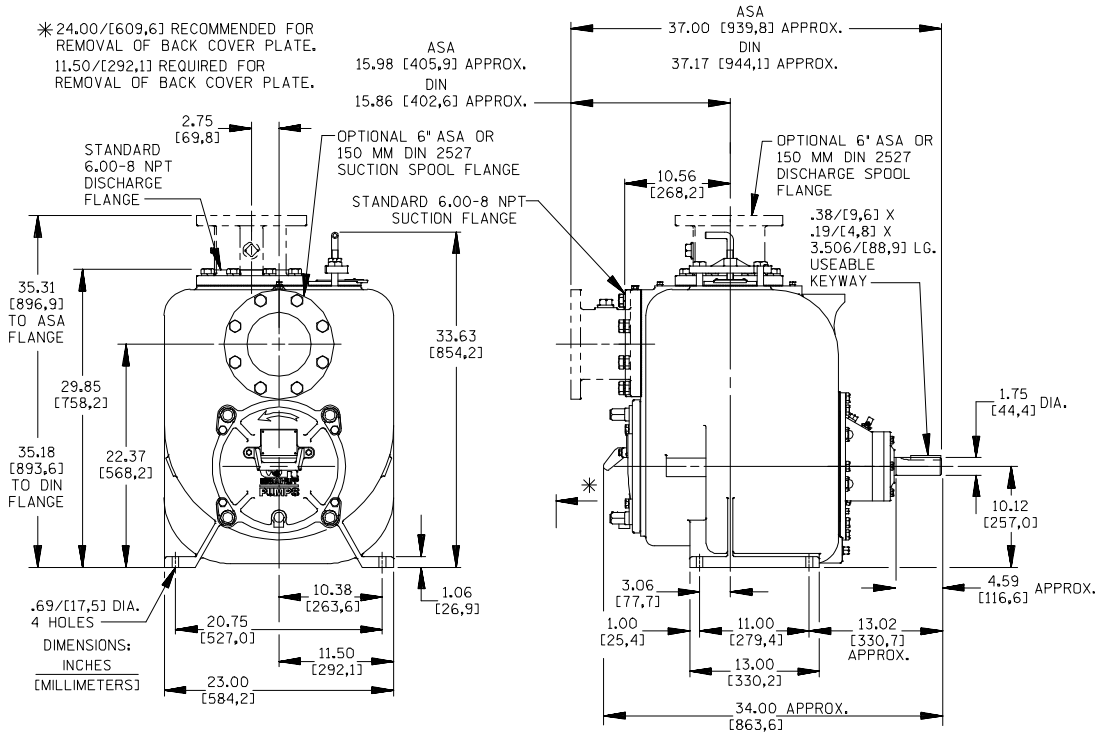
Printed in U.S.A.

Specification Data

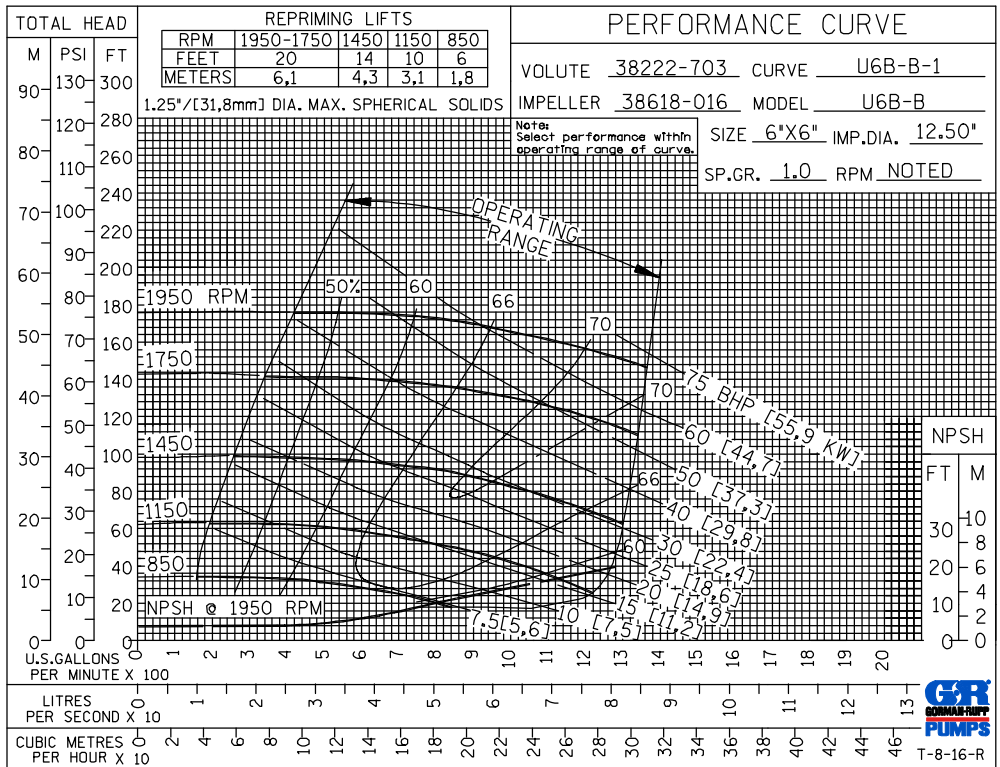
SECTION 50, PAGE 2920

APPROXIMATE
DIMENSIONS and WEIGHTS

NET WEIGHT: 1012 LBS. (459 KG.)
SHIPPING WEIGHT: 1137 LBS. (516 KG.)
EXPORT CRATE: 20 CU. FT. (0,57 CU. M.)



NOTE: OPTIONAL ASA OR DIN STANDARD SPOOL FLANGES AVAILABLE



GORMAN-RUPP PUMPS

www.grpumps.com

Specifications Subject to Change Without Notice

Printed in U.S.A.