

# Stainless Steel Basic Pump Self Priming Centrifugal Pump

## Model T6A65S-B

### Size 6" x 6"

**Super  
T SERIES**

VARIOUS PATENTS APPLY



#### PUMP SPECIFICATIONS

**Size:** 6" x 6" (152 mm x 152 mm) NPT - Female.

**Casing:** Stainless Steel CD4MCu.

Maximum Operating Pressure 79 psi (545 kPa).\*

**Semi-Open Type, Two Vane Impeller:** Stainless Steel CD4MCu.  
Handles 3" (76,2 mm) Diameter Spherical Solids.

**Impeller Shaft:** Stainless Steel 17-4 PH.

**Replaceable Wear Plate:** Stainless Steel CD4MCu.

**Removable Adjustable Cover Plate:** Stainless Steel CD4MCu;  
64 lbs. (29 kg).

**Seal Plate:** Stainless Steel CD4MCu.

**Flap Valve:** Fluorocarbon (DuPont Viton® or Equivalent) w/Stainless  
Steel Reinforcing.

**Bearing Housing:** Stainless Steel CD4MCu.

**Radial Bearing:** Open Single Row Ball.

**Thrust Bearing:** Open Double Row Ball.

**Bearing and Seal Cavity Lubrication:** SAE 30 Non-Detergent Oil.

**Suction Flange:** Stainless Steel CD4MCu.

**Discharge Flange:** Stainless Steel 316.

**Gaskets:** Fluorocarbon (DuPont Viton® or Equivalent), PTFE, Cork,  
and Rubber.

**O-Rings:** Fluorocarbon (DuPont Viton® or Equivalent).

**Hardware:** Stainless Steel 316.

**Pressure Relief Valve:** Stainless Steel 316.

**Bearing and Seal Cavity Oil Level Sight Gauges.**

**Optional Equipment:** Metal Bellows Seal. Automatic Air

Release Valve. 120V/240V Casing Heater. High Pump

Temperature Shutdown Kit. Self-Cleaning Wear Plate.

Stainless Steel CD4MCu Suction and Discharge Spool Flanges:

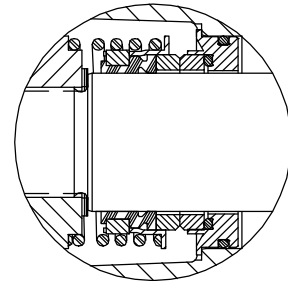
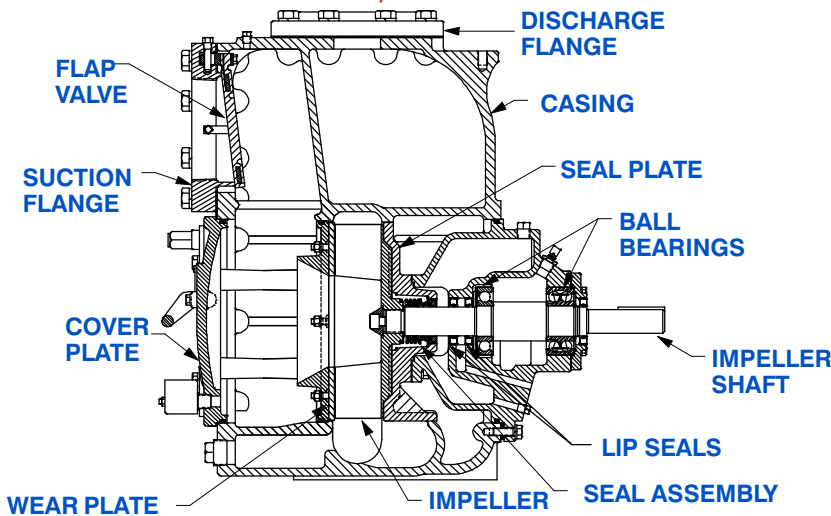
6" ASA (**Specify Model T6A65S-B /F**).

150 mm DIN 2527 (PN16) (**Specify Model T6A65S-B /FM**).

*\*Consult Factory for Applications Exceeding  
Maximum Pressure and/or Temperature Indicated.*



Shown with Optional Suction & Discharge  
Spool Flanges (Available in ASA or DIN  
Standard Sizes).



#### SEAL DETAIL

Mechanical, Oil-Lubricated, Double Floating, Self-Aligning. Silicon Carbide Rotating and Stationary Faces. Stainless Steel 316 Stationary Seat. Fluorocarbon Elastomers (DuPont Viton® or Equivalent). Stainless Steel 316 Cage and Spring. Maximum Temperature of Liquid Pumped, 160°F (71°C).\*



## GORMAN-RUPP PUMPS

www.grpumps.com

Specifications Subject to Change Without Notice

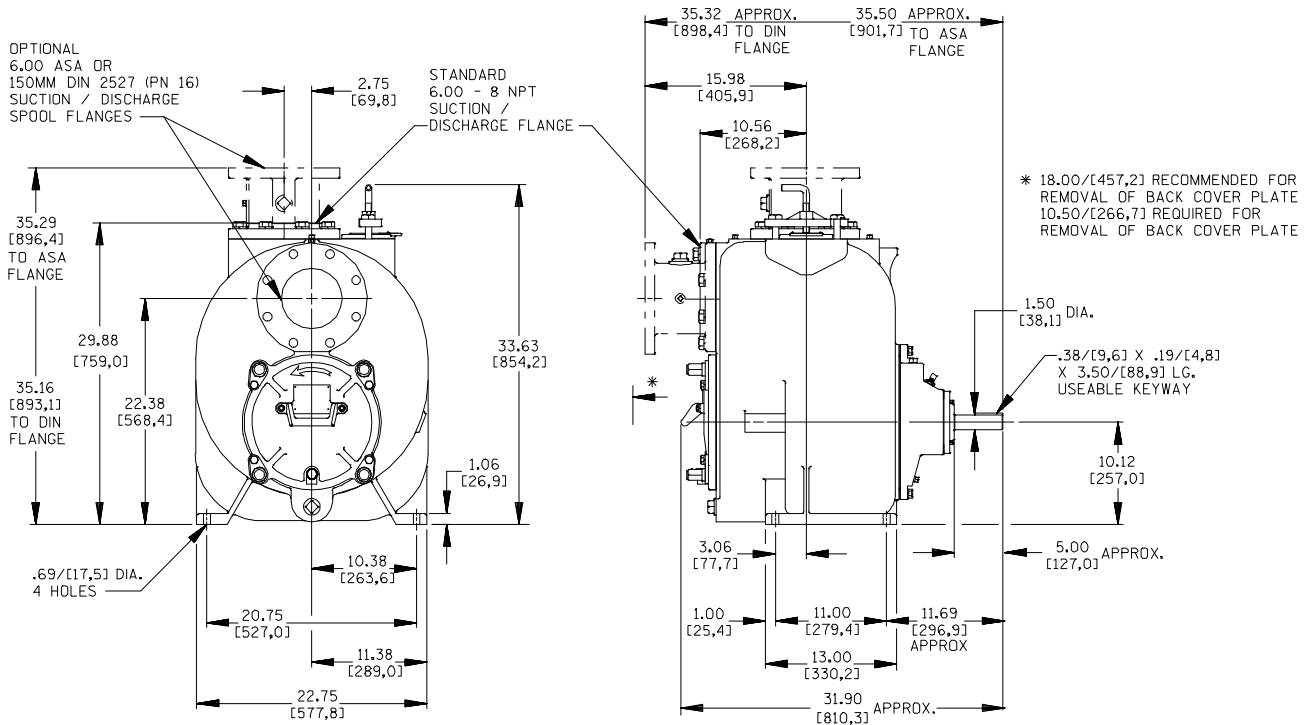
Printed in U.S.A.

**Specification Data**

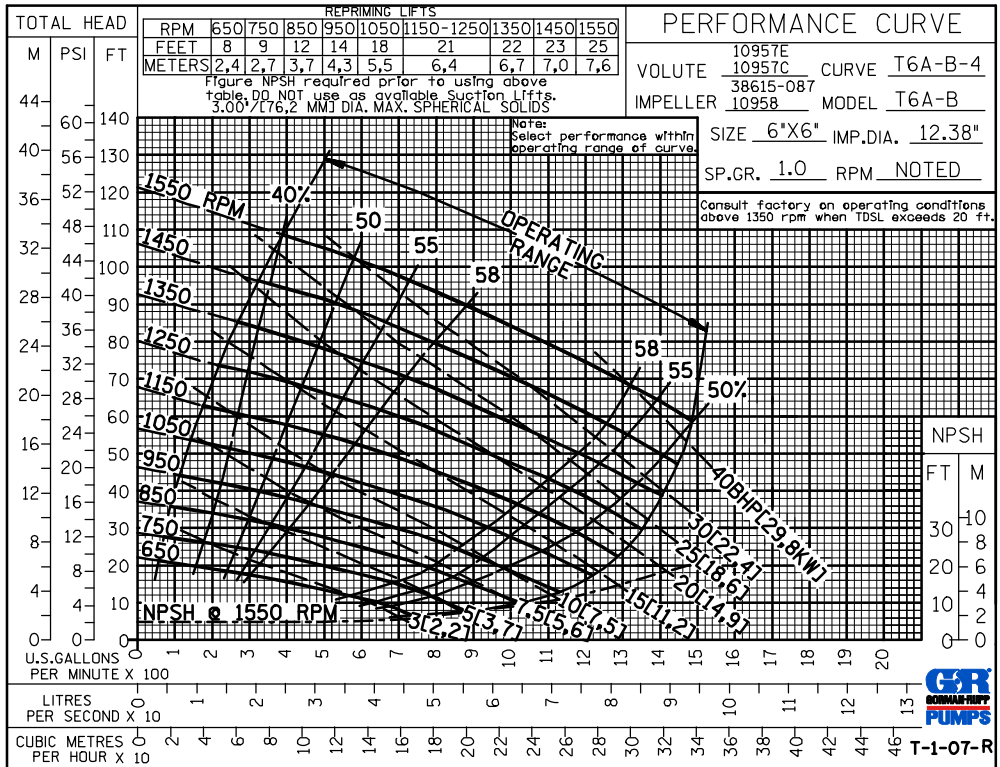
SECTION 55, PAGE 2230

**APPROXIMATE DIMENSIONS and WEIGHTS**

**NET WEIGHT: 875 LBS. (397 KG.)\***  
**SHIPPING WEIGHT: 930 LBS. (422 KG.)\***  
**EXPORT CRATE: 32.5 CU. FT. (0,92 CU. M.)**  
**\*ADD 30 LBS. (13,6 KG.) W/EACH SPOOL FLANGE**



**NOTE: OPTIONAL ASA OR DIN STANDARD SUCTION & DISCHARGE SPOOL FLANGES AVAILABLE**



**GORMAN-RUPP PUMPS**

www.grpumps.com

Specifications Subject to Change Without Notice

Printed in U.S.A.