



Submersible Pump

Model SM4G1-X30

Size 4"



PUMP SPECIFICATIONS

MSHA PUMP APPROVAL - 2G-3971A-0.

COMMONWEALTH OF PENNSYLVANIA APPROVAL BFE 34-13.

Diffuser: Aluminum Alloy 356-T6 w/Urethane Bonded Lining.

Impeller: G-R Hard Iron.

Adjustable Suction Head: Aluminum Alloy 356-T6 w/Urethane Bonded Lining.

Maximum Operating Pressure 168 psi (1158 kPa).*

Seal Plate: Aluminum Alloy 356-T6 w/Urethane Bonded Lining.

Motor Housing: Aluminum Alloy 356-T6.

Motor Shaft: Stainless Steel Type 17-4 PH.

Bearings: Upper, Two Synthetic Seals, Single Row Ball Bearing.
Lower, Two Shields, Double Row Ball Bearing.

Discharge Flange: Gray Iron 30.

Gaskets: Cork with Nitrile Binder (NC710).

O-Rings: Buna-N.

Wetted Hardware: Standard Plated Steel and Stainless Steel.

Strainer: Urethane Coated Steel; 48% Open Area,
0.50" (12.7 mm) Diameter Openings.

Base Plate: Aluminum Alloy No. 356-T6.

Hoisting Bail: Urethane Coated Steel.

Standard Equipment

NEMA Type 10 Explosion Proof Control Box Provides On-Off,
Circuit Breaker and Motor Overload Protection.

MSHA Certification No. X/P-3026-1.

Adjustable Suction Head w/Built-In Staging Adaptor.

Optional Equipment

MSHA-Certified Automatic Control Box, [Single Ball Type Float Switch](#) **

** *Cable Lengths From 50 to 400 Feet Available.*

MOTOR/CABLE SPECIFICATIONS

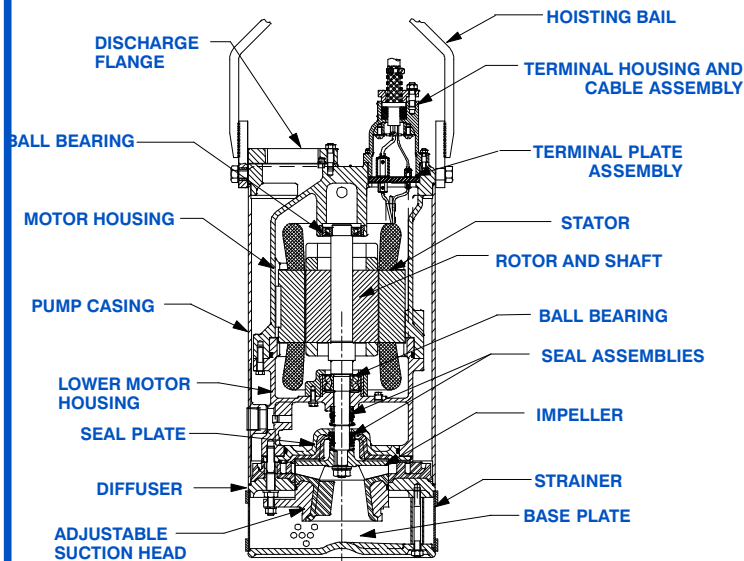
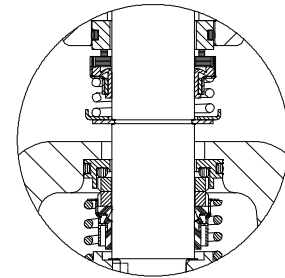
Motor: Air Filled Enclosure w/Thermal Overload Protection; 30 H.P.; 3450 R.P.M.

Three Phase: 460/575 Volt, 60 Hz, 38.5/30.8 Full Load AMPS, 27.8 kW (Max.)

MSHA Certification No. X/P-3690-0.

Power Cable: 9 Wire; Type SPC; (3) 8 AWG. Power Conductors, (1) 6 AWG.
Ground Conductor, (4) 14 AWG. Control Conductors and (1) 8 AWG. Ground
Check. Nominal Length 50 Feet (15 m) Standard. (*Specify Alternate Length at
Time of Order.****)

*** *Circuit Breaker Amp Rating and Maximum Combined Length of Motor and
Trailing Cables May Apply (Consult Factory for Details).*



SEAL SPECIFICATIONS

Tandem, Oil Lubricated.

Upper Seal: Type 21, Mechanical. Carbon Rotating Face.
Ni-Resist Stationary Face. Fluorocarbon Elastomers
(DuPont Viton® or Equivalent). Stainless Steel 18-8
Cage and Spring.

Lower Seal: Type 2, Mechanical. Silicon Carbide Rotating
Face and Tungsten Titanium Carbide Stationary Face
Stainless Steel 316, Stationary Seat Fluorocarbon
Elastomers (DuPont Viton® or Equivalent). Stainless
Steel 18-8 Cage and Spring.

Maximum Temperature of Liquid Pumped, 122°F (50°C).*

* *Consult Factory for Applications Exceeding Maximum
Pressure and/or Temperature Indicated.*



GORMAN-RUPP PUMPS

www.grpumps.com

Specifications Subject to Change Without Notice

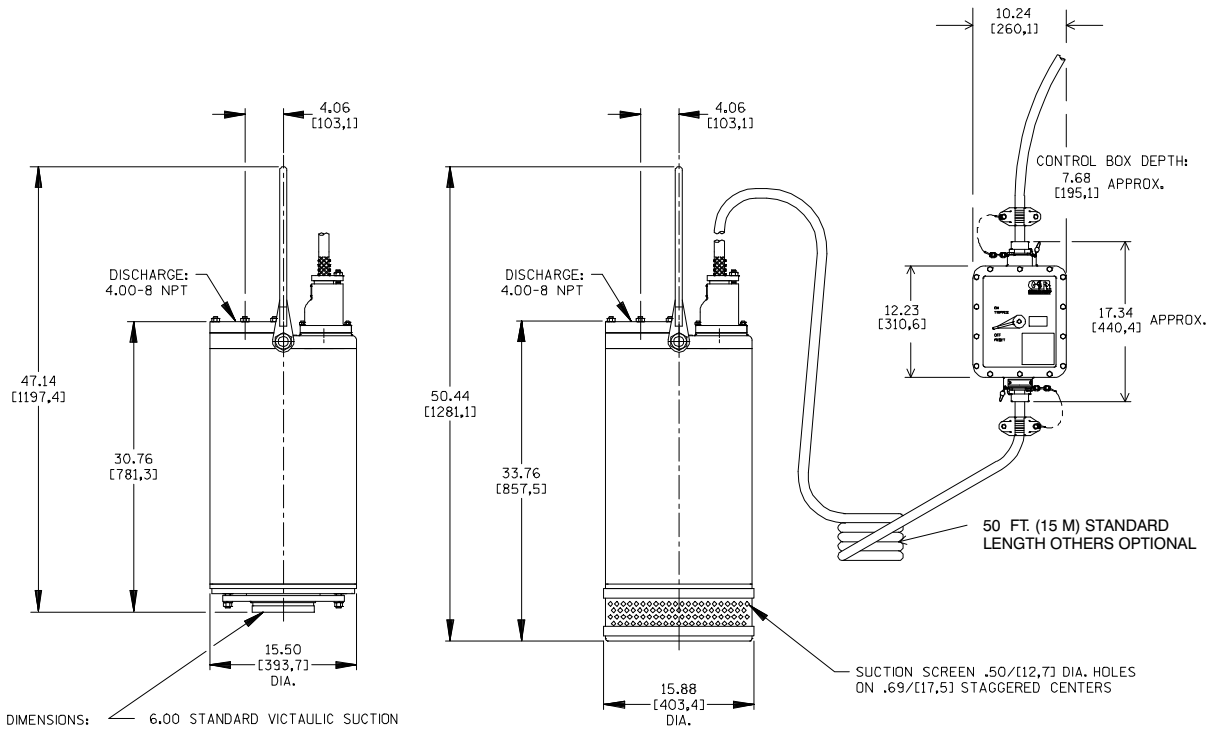
Printed in U.S.A.

Specification Data

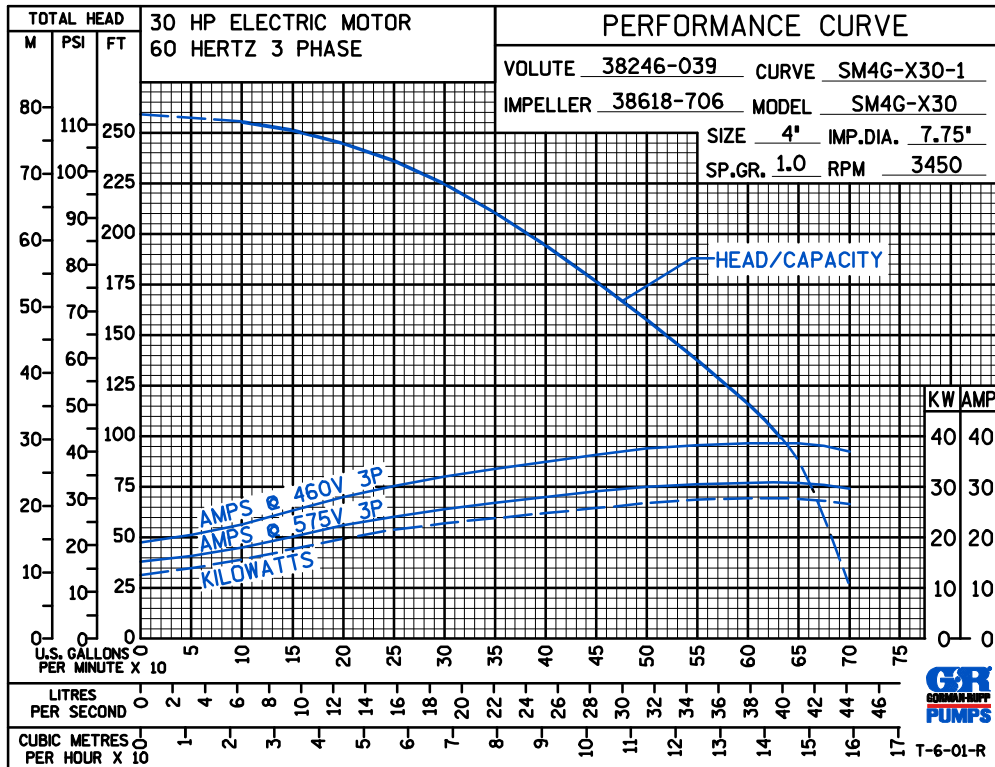
SECTION 132, PAGE 1200

APPROXIMATE DIMENSIONS and WEIGHTS

PUMP & CABLE NET WEIGHT: 415 LBS. (188,2 KG.)
CONTROL BOX NET WEIGHT: 35 LBS. (15,9 KG.)
GROSS SHIPPING WEIGHT: 525 LBS. (238,1 KG.)
EXPORT CRATE: 19.0 CU. FT. (0,53 CU. M.)



Victaulic is a Registered Trademark of Victaulic Company of America.



GORMAN-RUPP PUMPS

www.grpumps.com

Specifications Subject to Change Without Notice

Printed in U.S.A.